



The Front Lines of the Fight Against COVID-19

A TOWN HALL CONVERSATION XI

We will begin at 2 p.m.



COVID-19 Update

Marc L. Boom, MD
February 3, 2021

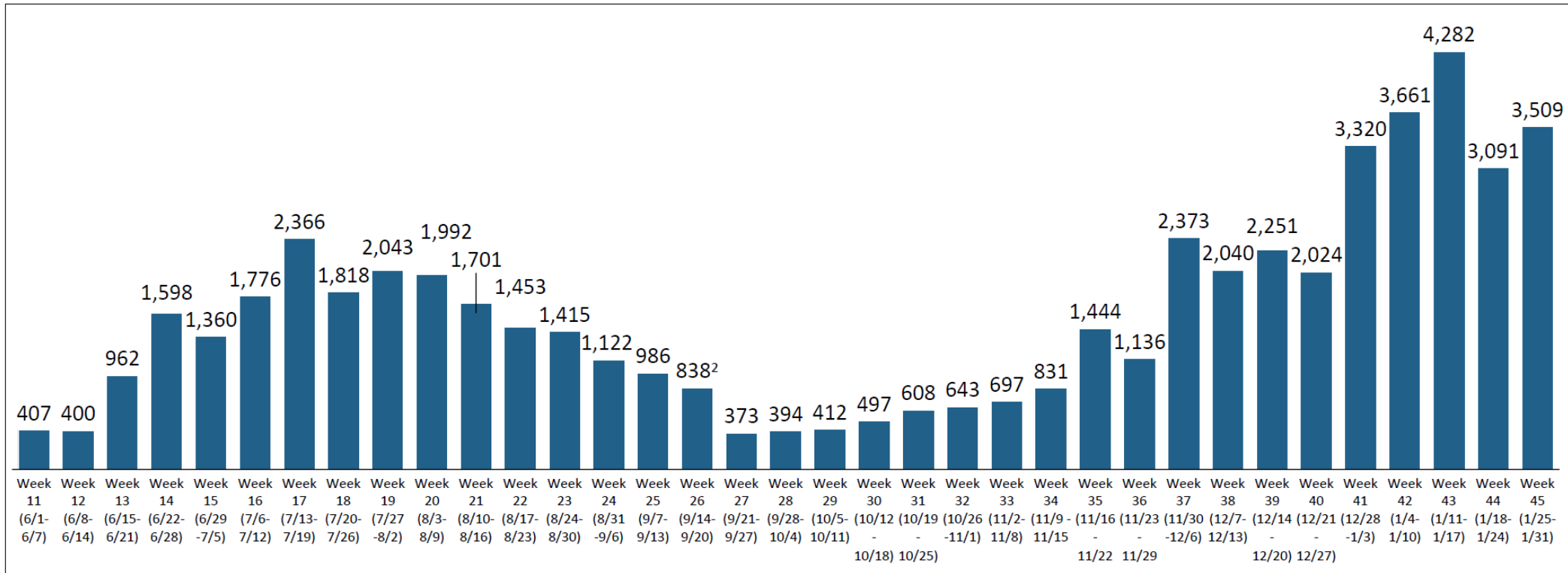


3 COVID-19 CASE TRENDS

January 31, 2021

WEEKLY AVERAGE OF DAILY NEW COVID-19 POSITIVE CASES

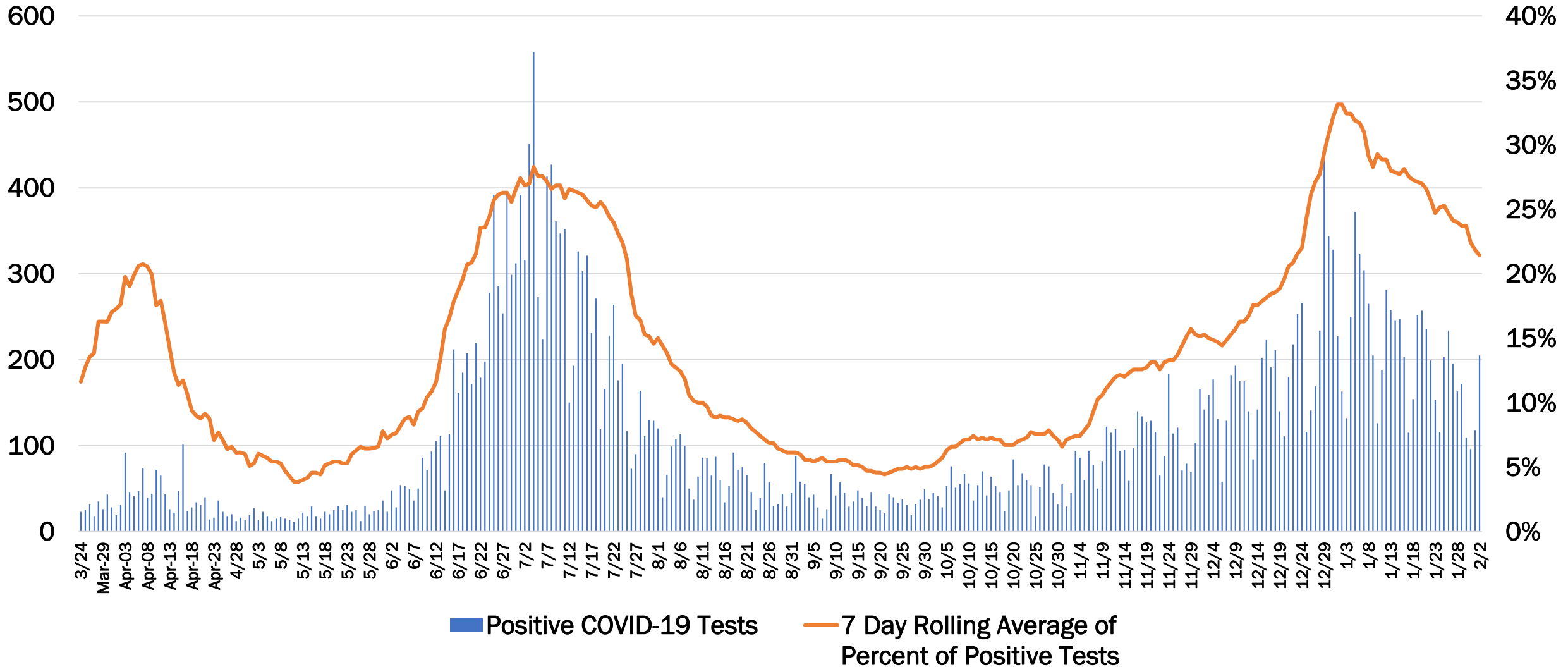
Daily average new cases in Greater Houston Area¹ (Monday-Sunday)



1. Austin, Brazoria, Chambers, Fort Bend, Galveston, Harris, Liberty, Montgomery and Waller
2. Includes only net new cases. Excludes 4,135 cases reported by the state as "old" cases during week of 9/14

Houston Methodist Testing Trend

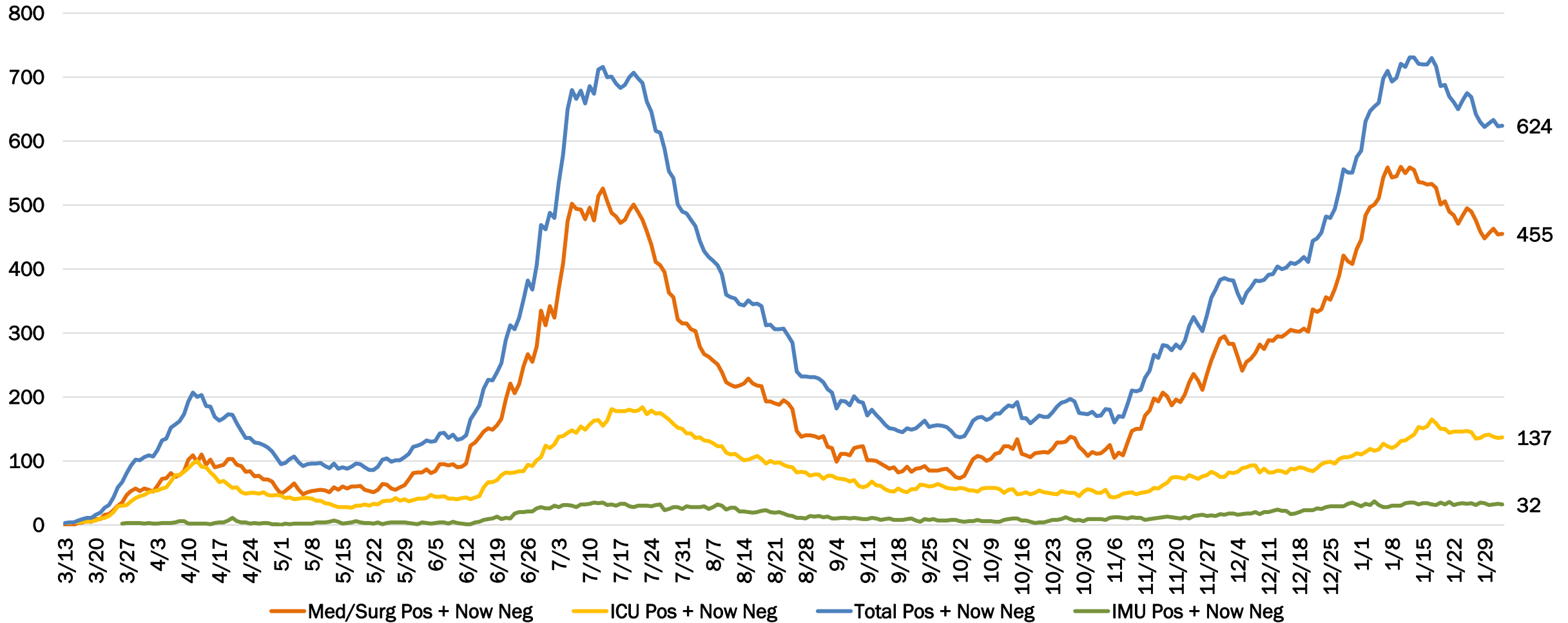
Confirmed COVID-19 Lab Tests



Houston Methodist COVID-19 Cases by Day



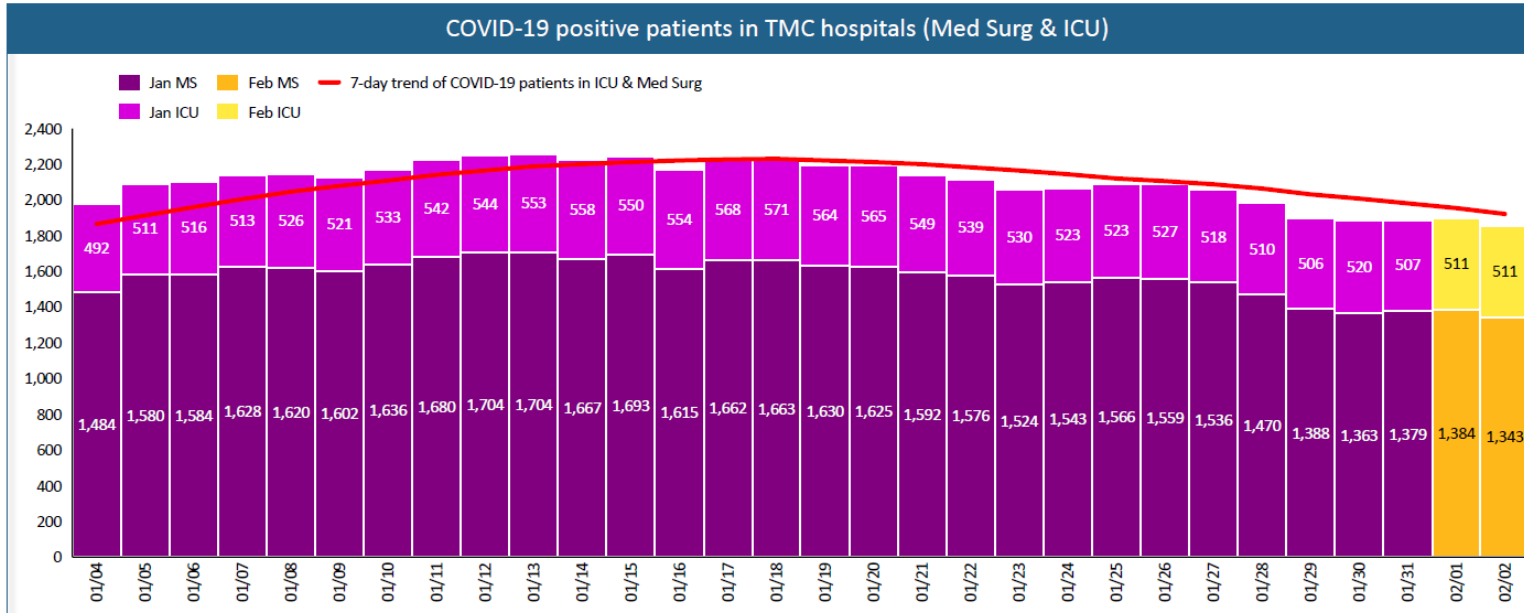
Houston Methodist COVID-19 Patients by Day



4

COVID-19 TMC HOSPITALIZATION

TOTAL TMC COVID-19 POSITIVE PATIENTS IN HOSPITAL



February 2, 2021

Current status:

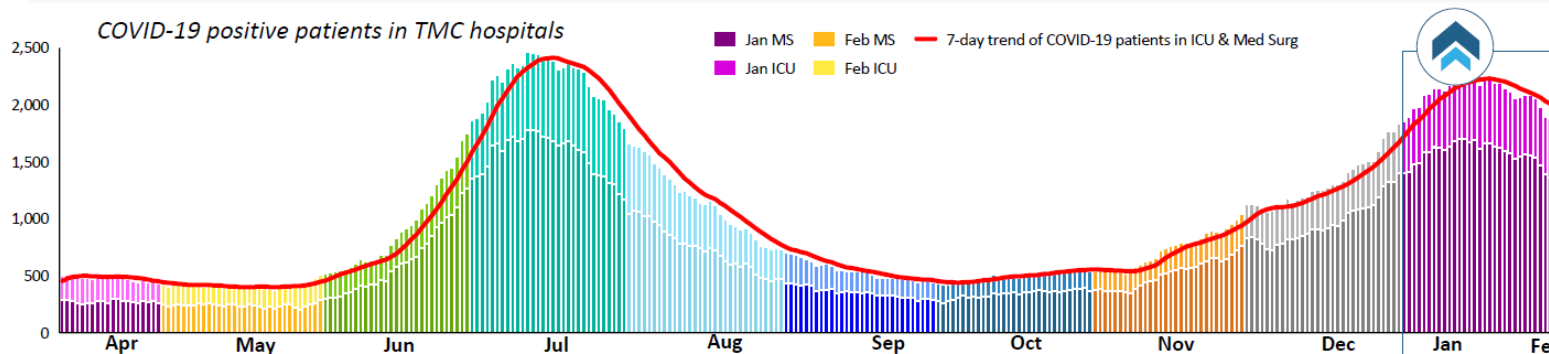
-1.5% total daily growth rate (averaged over 7 days) in COVID-19 patients TMC hospitals

- 0.4% ICU daily growth rate
- 1.9% Med Surg daily growth rate

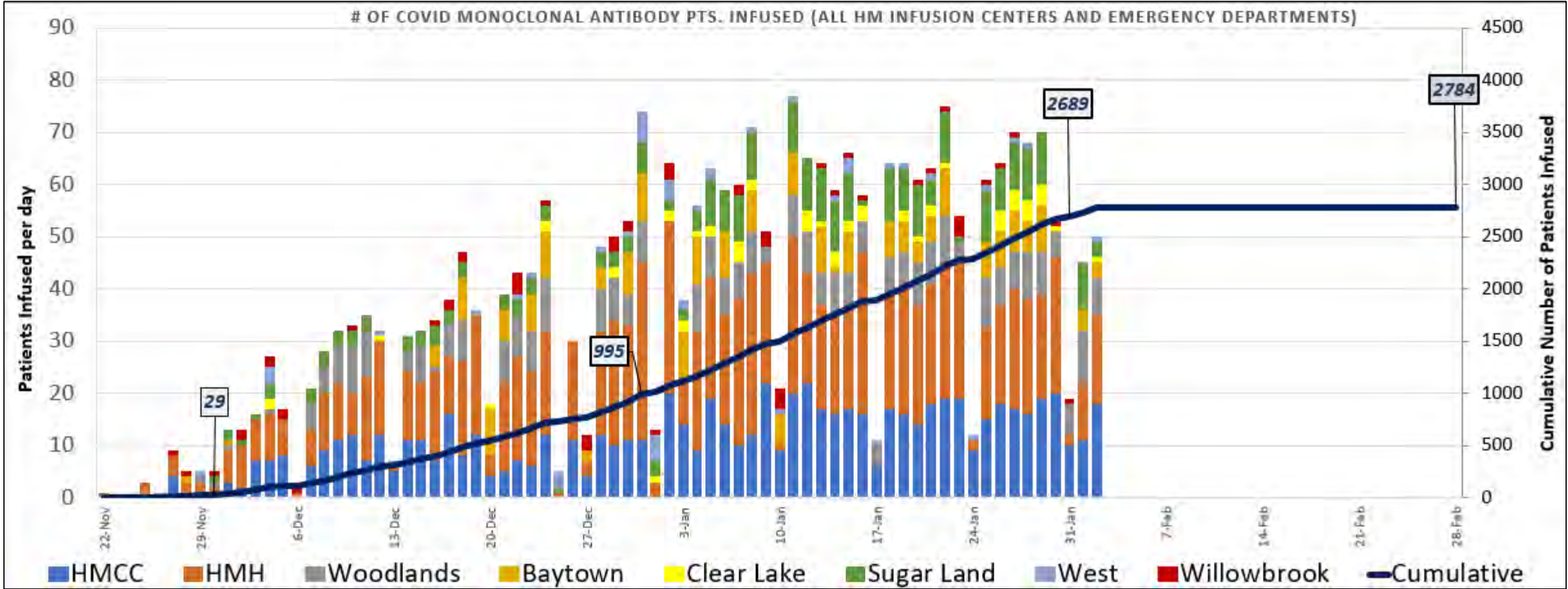
Notes:

While new daily cases may fluctuate for a variety of reasons (e.g., testing), the number of COVID-19 positive patients being treated in med surg and ICU shows an objective view of how COVID-19 impacts hospital systems

Note: Data for MHHS current as of 12/7 pending update



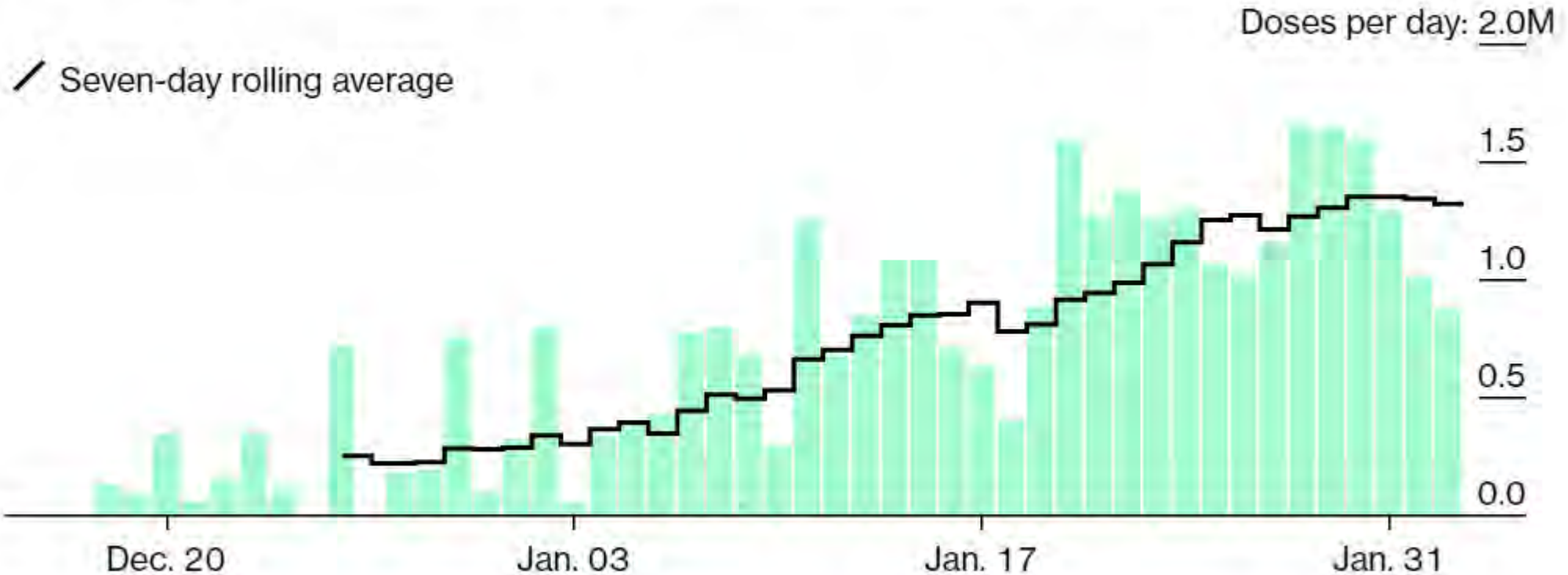
Monoclonal Antibodies



Daily COVID-19 Vaccinations in the U.S.

Daily Vaccinations in the U.S.

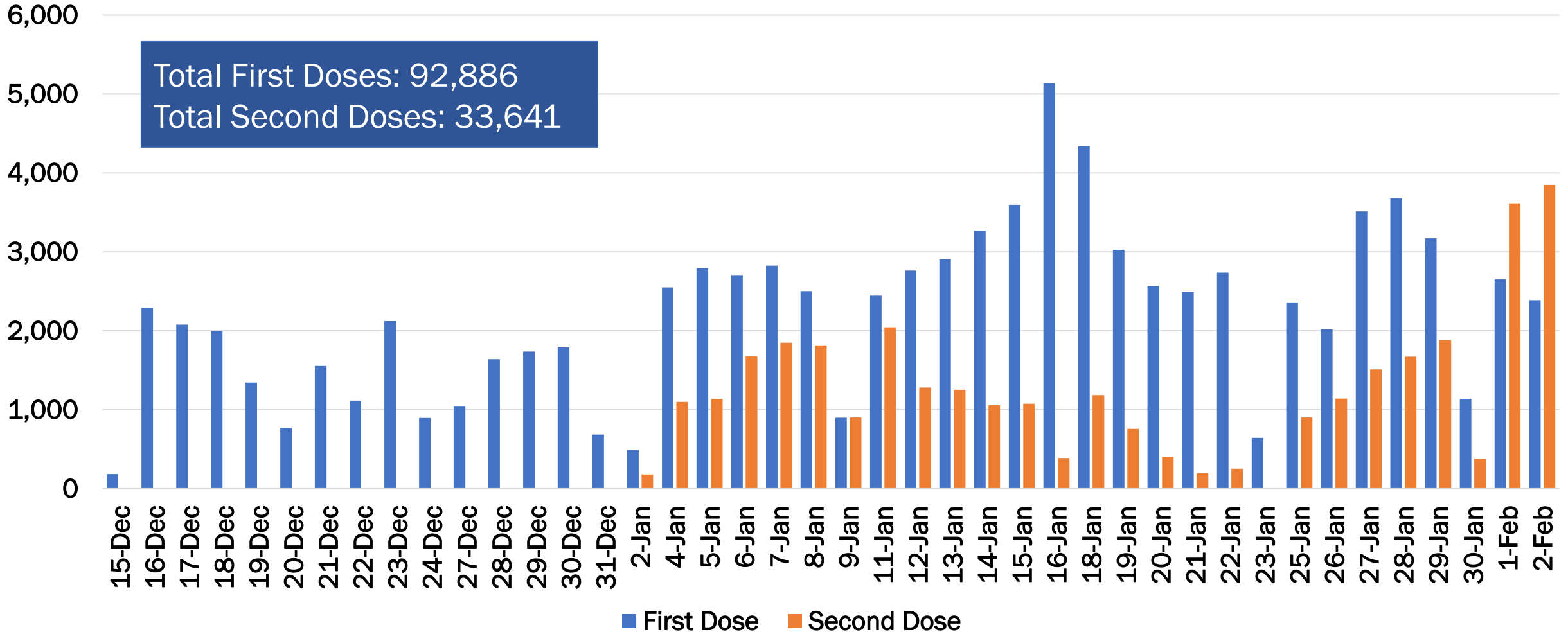
An average of 1.32 million shots were recorded each day for the last week



Note: Data from Bloomberg's Covid-19 Vaccine Tracker

HM COVID-19 Vaccines Administered

Individuals Vaccinated at HM by Day

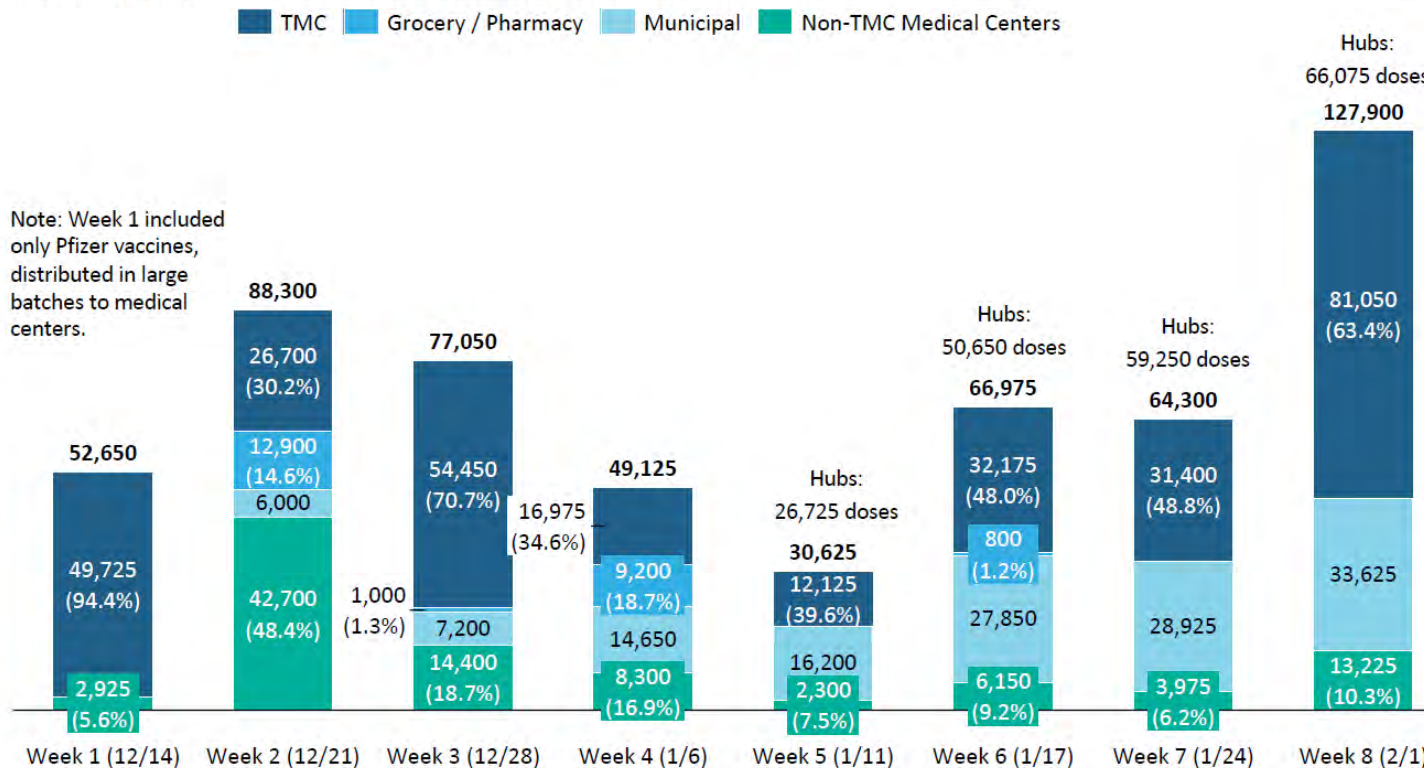


TMC Vaccination Statistics



COVID-19 VACCINE ALLOCATIONS FOR GREATER HOUSTON

Weekly vaccine allocation for Greater Houston Area¹ (# doses)



Note: Week 1 included only Pfizer vaccines, distributed in large batches to medical centers.

January 31, 2020

DSHS Allocation Week 8¹

In Week 8, TX will receive 520,425 first doses of Pfizer and Moderna vaccines, distributed to:

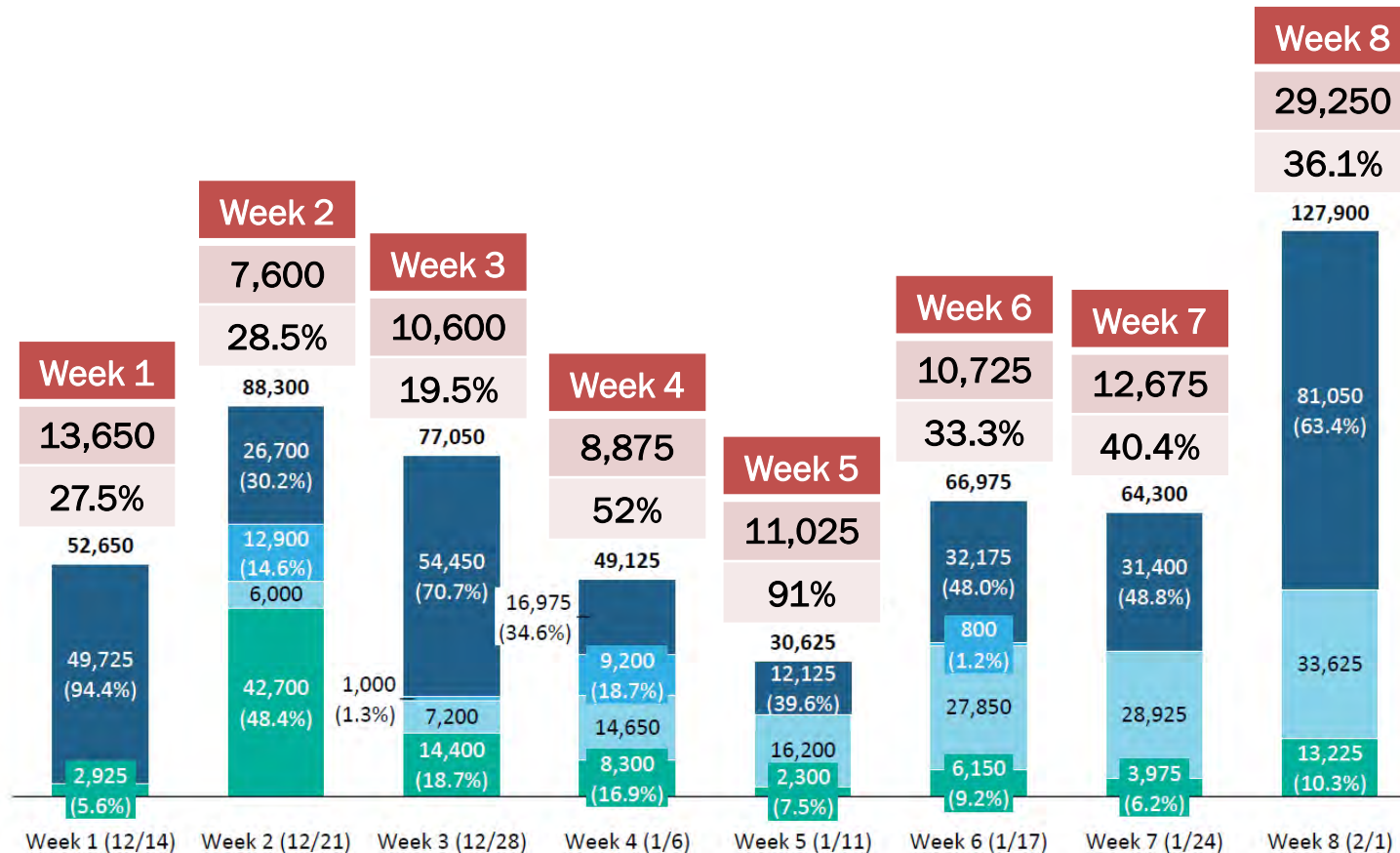
- 82 large vaccination hubs² (13 in Houston MSA)
- 262 other providers

The state will be allocated equivalent amounts of second dose vaccine, made available for order 21 days after the corresponding first dose shipment.

“The purpose of hubs are to provide as many eligible people the vaccine as quickly as possible.”
- DSHS

TMC Vaccination Statistics

Houston Methodist COVID-19 Vaccine Received and Percent of TMC Allocation



January 31, 2020

DSHS Allocation Week 8¹

In Week 8, TX will receive 520,425 first doses of Pfizer and Moderna vaccines, distributed to:

- 82 large vaccination hubs² (13 in Houston MSA)
- 262 other providers

The state will be allocated equivalent amounts of second dose vaccine, made available for order 21 days after the corresponding first dose shipment.

“The purpose of hubs are to provide as many eligible people the vaccine as quickly as possible.”
- DSHS

Vaccination Hubs for the State Expanded

“State health officials have announced 79 hub providers that are expected to receive allotments of COVID-19 vaccine this week.”

Hub providers include:

- 6 – Harris County
- 2 – Galveston County
- 1 – Chambers County
- 1 – Fort Bend County
- 1 – Liberty County
- 2 – Montgomery County

Suburbs to become hubs for vaccine

By Alejandro Serrano

STAFF WRITER

State health officials have announced 79 hub providers that are expected to receive allotments of COVID-19 vaccines this week, including newly designated hubs in some suburbs of Houston.

The hub providers include two in Galveston County, one each in Fort Bend County, Montgomery County and Liberty County and six in Harris County, according to a list of the hubs that are intended to focus on mass vaccination efforts.

Governor Hosts Roundtable at Houston Methodist



GOVERNOR GREG ABBOTT

For Immediate Distribution | January 19, 2021 | (512) 463-1826

Governor Abbott Hosts Roundtable Discussion, Provides COVID-19 Vaccine Update With Houston Healthcare Professionals

AUSTIN - Governor Greg Abbott today held a roundtable discussion alongside healthcare professionals at Houston Methodist Hospital to highlight his legislative priorities to ensure a healthier future for the state of Texas. Following the roundtable, the Governor provided an update on the State's COVID-19 vaccination efforts. The Governor was joined by Texas Division of Emergency Management (TDEM) Chief Nim Kidd, Texas Department of State Health Services (DSHS) Commissioner John Hellerstedt, MD, Executive Vice Chancellor for Health Affairs of the University of Texas System John Zerwas, MD, and Houston Methodist President and CEO Marc Boom, MD.



ABBOTT DISCUSSES TEXAS COVID VACCINATIONS

GOVERNOR MET WITH MEDICAL EXPERTS AT HOUSTON METHODIST

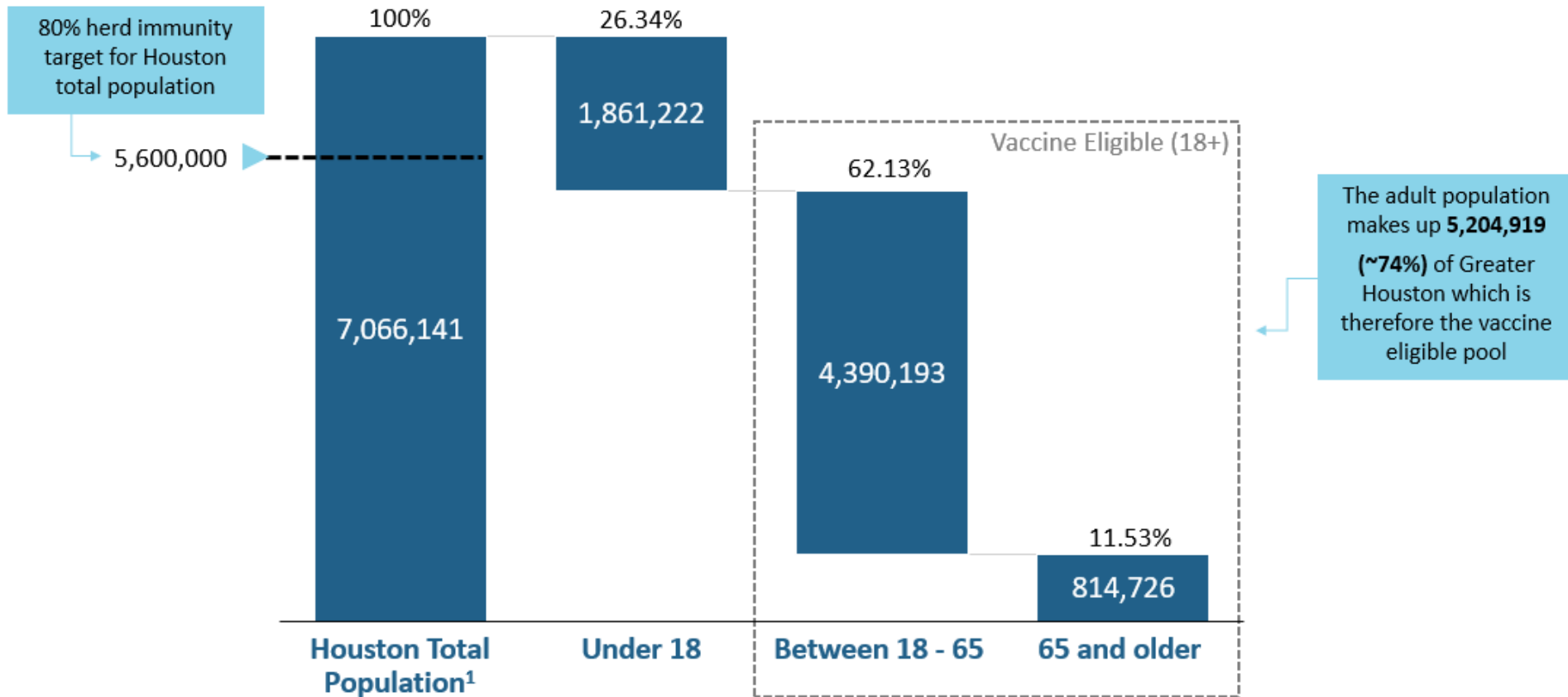
KHOU 11

“Today is a day we celebrate and highlight the role that Houston Methodist has played, and we encourage others to copy their example.”

“We came here to learn from them why they are succeeding so well in vaccinating people and in controlling this pandemic.”

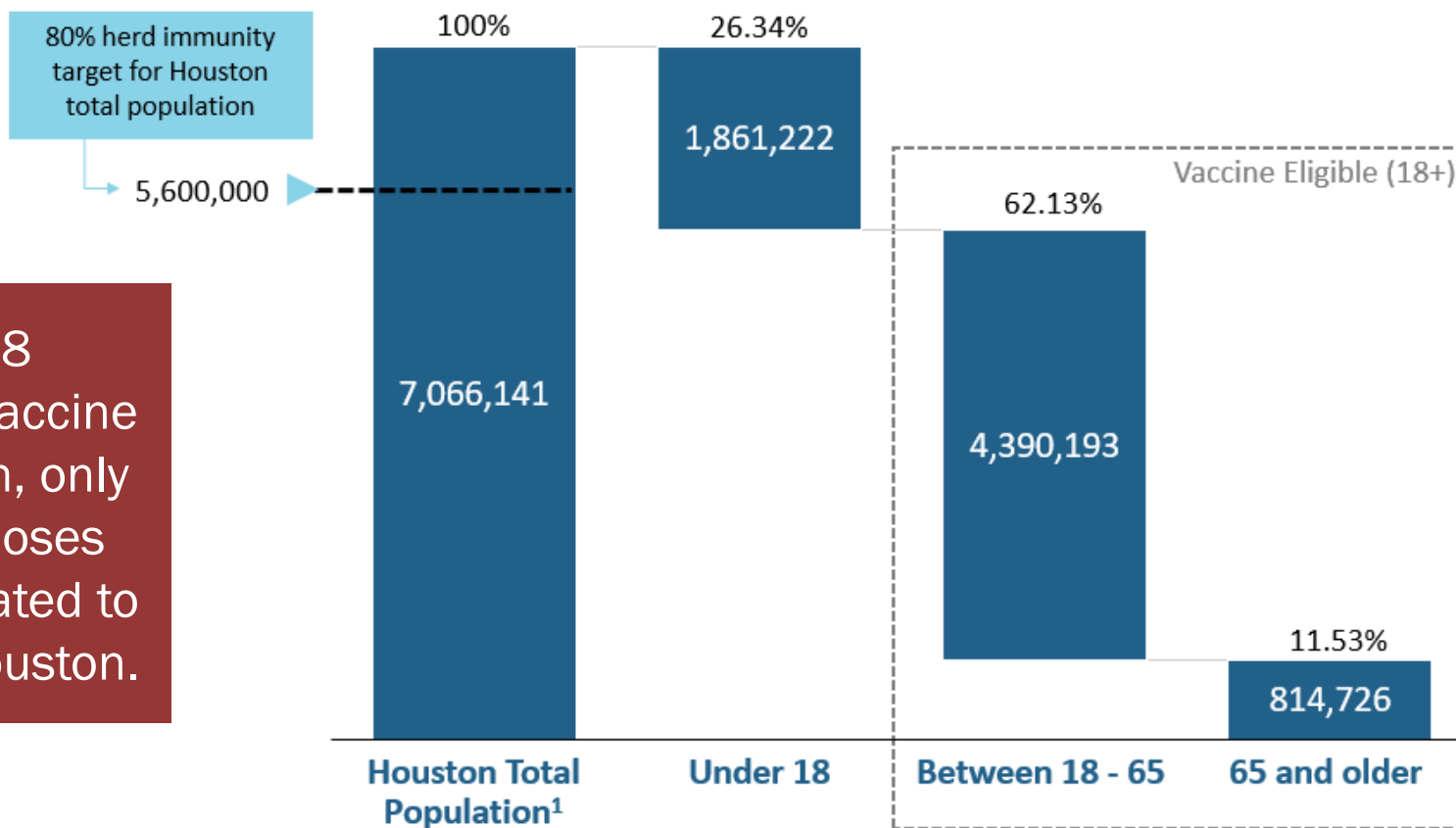
TMC Analysis: Vaccine Needed for Greater Houston

ACHIEVING HERD IMMUNITY IN HOUSTON



TMC Analysis: Vaccine Needed for Greater Houston

ACHIEVING HERD IMMUNITY IN HOUSTON



In the first 8 weeks of vaccine distribution, only 556,925 doses were allocated to Greater Houston.

The adult population makes up **5,204,919 (~74%)** of Greater Houston which is therefore the vaccine eligible pool

Approximately 420,000 individuals in Group 1A

¹ Source : US Census. Houston MSA includes 9 counties: Austin, Brazoria, Chambers, Fort Bend, Galveston, Harris, Liberty, Montgomery and Waller

TMC Analysis: Vaccine Needed for Greater Houston

THREE POTENTIAL SCENARIOS FOR REACHING HERD IMMUNITY IN HOUSTON

Estimated vaccination rate and workforce needed to achieve herd immunity in set timeline

1 Current rate

10,964 vaccines / day
2.34 years to herd immunity

Requires full utilization of:

- **91** vaccinators / day
- **161** support staff / day

Current rate estimate is based on actuals observed at TMC institutions, plus assumption that all other Houston sites are distributing their full inventory allocation as it is received.

2 240-day

39,037 vaccines / day
240 days to herd immunity

Requires full utilization of:

- **325** vaccinators / day
- **575** support staff / day

Follows timeline broadly talked about by Dr. Fauci targeting herd immunity by September 2021

3 180-day

52,049 vaccines / day
180 days to herd immunity

Requires full utilization of:

- **434** vaccinators / day
- **766** support staff / day

Israel, with a similar population, has achieved 150,000 vaccinations per day with sufficient supply, plans to reach herd immunity in several months.

Note: Israel has a centralized healthcare system.

Target

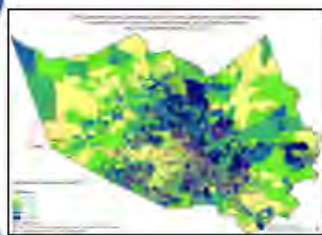
TMC Analysis: Reaching At-Risk Populations

THE AT-RISK POPULATION FOR HOUSTON IS ESTIMATED TO BE ~944K PEOPLE; WE HAVE A 4-PART PLAN TO REACH THEM

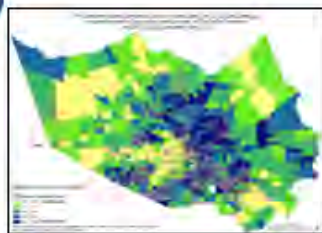
Heatmaps of at-risk population provide planning data



- Identifying zip codes with highest infections per 100k population over the last month



- Overlaying the highest concentrations of Low-to-Moderate Income



- Overlaying highest CDC Social Vulnerability Index areas



943,739 estimated at risk people in Greater Houston
(~13% of total Houston MSA population)



A 3-part plan is in place to reach at-risk population in Greater Houston

- 1 City of Houston has identified 37 distribution sites targeting zip codes with highest density of at-risk population and is partnering with pharmacy network to focus on them directly
- 2 Harris County is **deploying up to 6 mobile sites to target highest concentration of at-risk population**, and plans to adjust dynamically to the virus spread pattern
- 3 Harris Health System will **leverage hospital, clinic locations, and mobile units throughout the county to directly serve our at-risk population** including the home-bound.
- 4 Coordinated **Vaccine Education Campaign** by City and County Public Health and TMC leaders

- The vaccines are safe and effective; get it immediately when it is your turn.
- Please be patient.
- The state creates the prioritization; please wait your turn.
- Recognize that side effects, while mild, are common; they are much better than getting COVID.
- Take the first vaccine you are offered anywhere, anytime.
- Even after vaccination, please continue wearing a mask and physical distancing.

HOUSTON
MethodistSM
LEADING MEDICINE

Fighting COVID-19: Using the Immune System

February 3, 2021

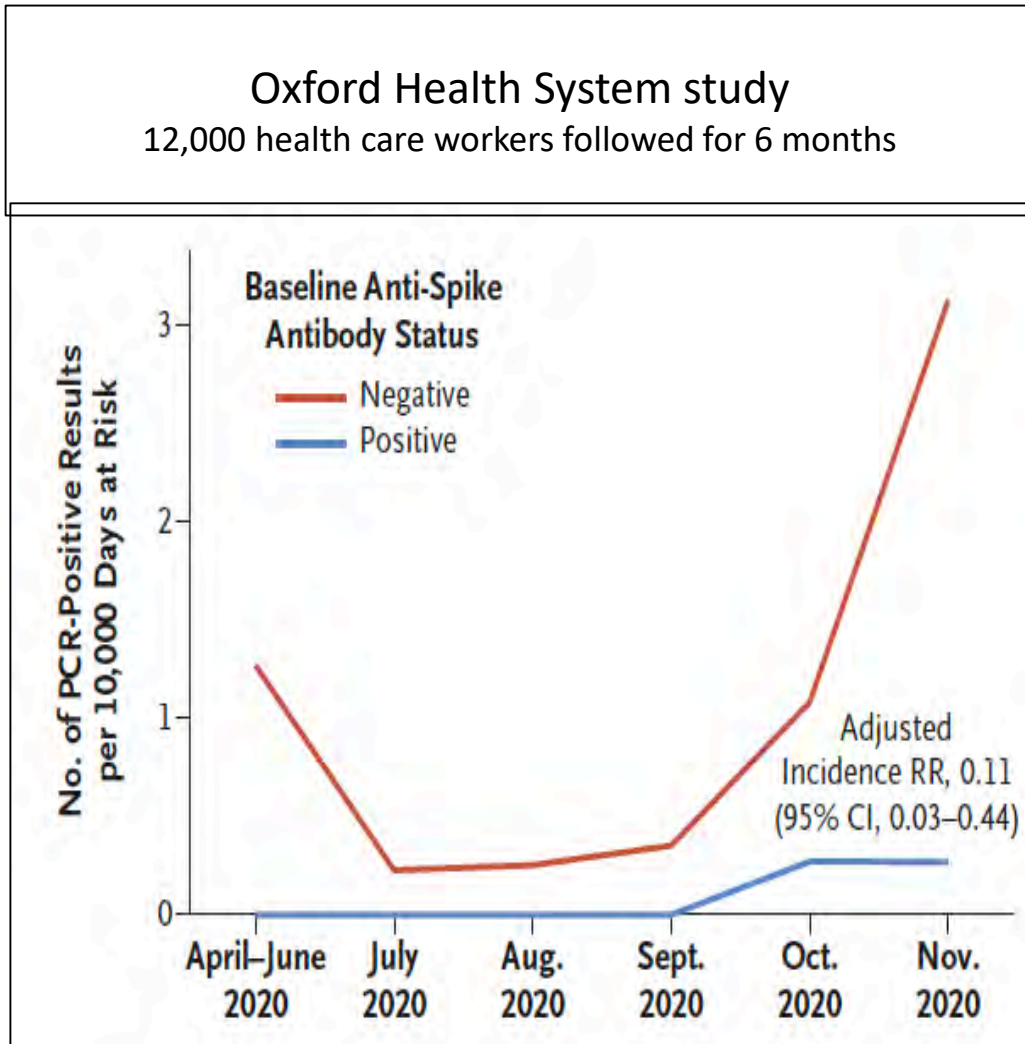
H. Dirk Sostman, MD FACR

Ernest Cockrell, Jr. Presidential Distinguished Chair

EVP & Chief Academic Officer



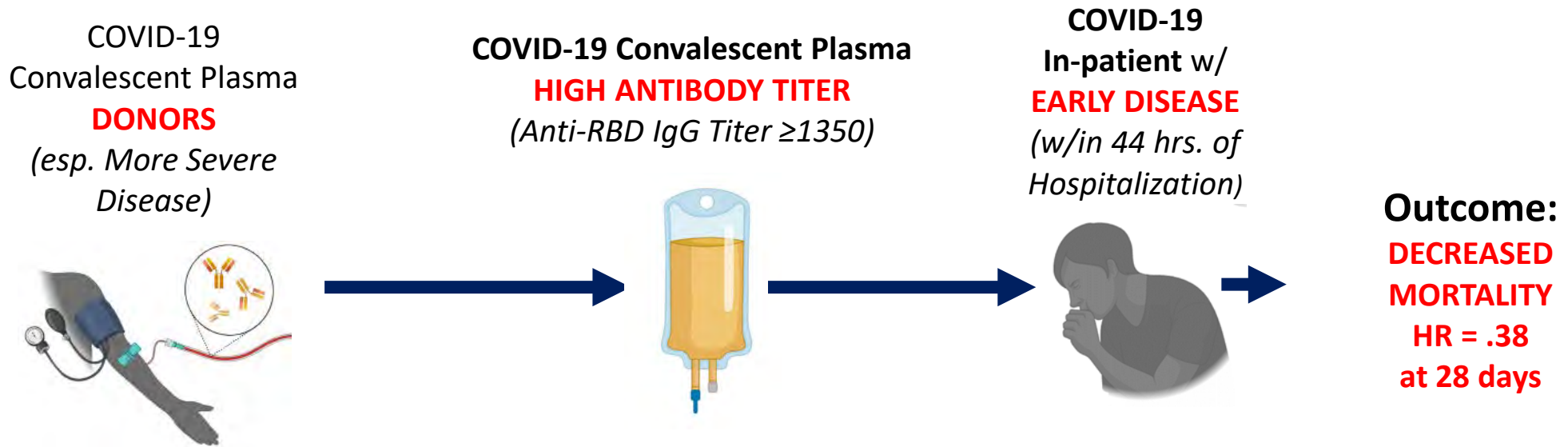
Protection by Previous Infection



- Public Health England SIREN Study
- Regular antibody and PCR testing of 20,000 health care workers
- Of those without antibodies at baseline
 - 409 were infected
 - 79% had symptoms
- Of those with antibodies
 - 44 were re-infected
 - 83% reduction in likelihood of infection
 - **only 12% had symptoms**
- But, even with antibodies, some had high levels of virus – could be infectious

COVID-19 Antibody Treatments

Convalescent Plasma: Houston Methodist Cohort Research Confirmed by RCT

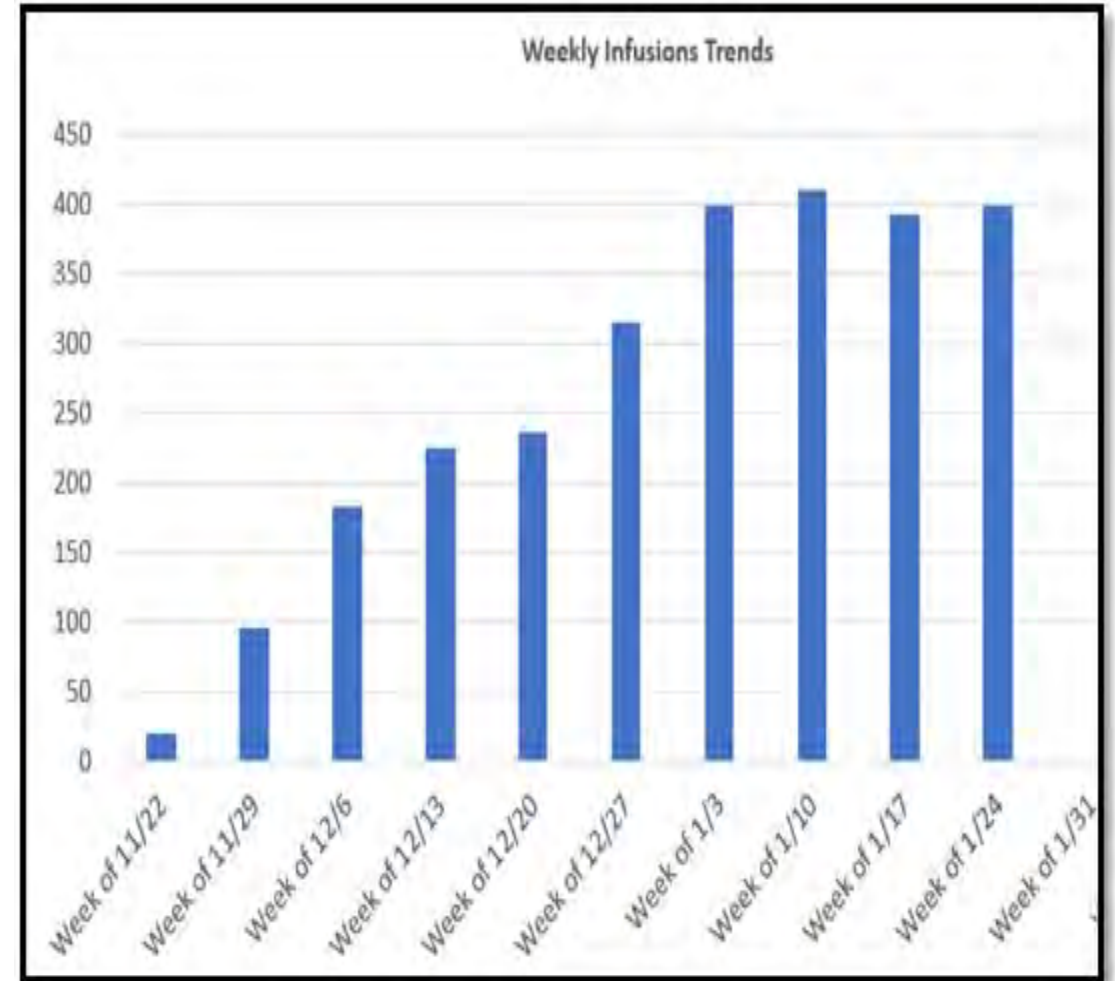


**Libster et al NEJM January 2021:
Randomized placebo-controlled trial found HR of 0.48**

Courtesy of Dr. Eric Salazar
Images adapted from Biorender.com

Monoclonal Antibodies for COVID-19

- EUA for **early, mild – moderate** COVID-19
 - Lilly and Regeneron
 - Positive SARS-CoV-2 test + high risk
 - **60 – 65%** reduction in hospitalization
 - Single mAb → 6% resistant mutants
 - Dual mAb → 0% resistant mutants
- Studies in hospitalized patients showed little or no efficacy
 - Important to treat early



Recent Data on mAb Therapy for COVID-19

- Lilly Long-Term Care Prevention Study
 - 80% reduction in symptomatic infection in 299 Nursing Home residents who tested negative at study initiation
 - In 41 who tested positive at study start, 0/21 in treatment group died, 4/20 in placebo
- Lilly Early Treatment Study (mAb “cocktail”)
 - 1,035 high-risk patients with COVID
 - mAb group – 2.1% events, placebo group 7%
 - mAb group – 0 deaths, placebo – 10 deaths
- Now exploring lower doses, sub-cutaneous administration
- Regeneron Household Contacts Prevention
 - 100% prevention of symptomatic infection in people with household exposure to COVID
 - Reduction in asymptomatic infection (5.4% in mAB group versus 6.7% in placebo group)
 - Lower viral load and shorter duration of viral shedding
- Action versus viral variants
 - Dual mAb cocktail is **active** against UK and SA variants

COVID-19 Vaccines

Approved or To-Be-Approved Vaccines

CP = convalescent plasma

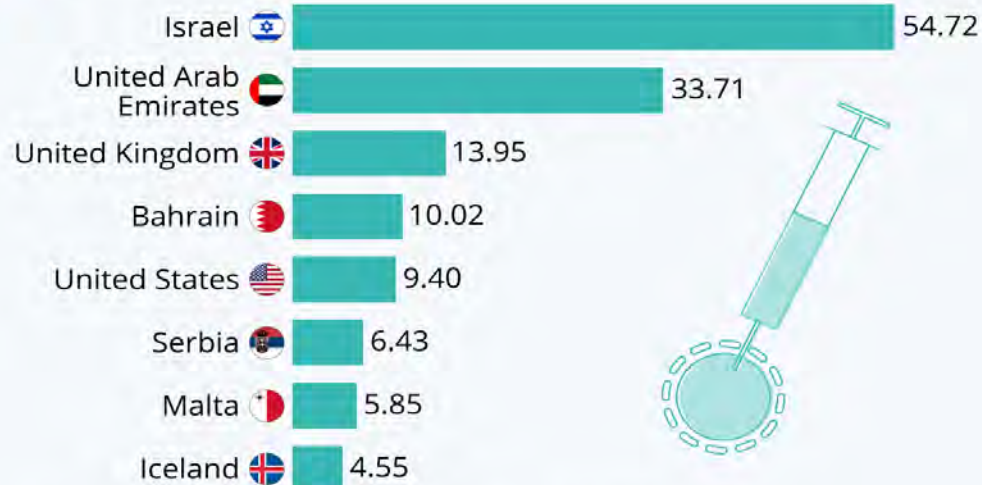
Vaccine	Technology	Antibody Response	Protection from Infection (Monkeys)	Protection from Symptomatic / Severe Illness in Humans	Protection from Asymptomatic Infection In Humans
Moderna (US, UK, EU)	mRNA	Much >> than CP	"Sterilizing immunity"	94% / 100%	66% after dose 1 <i>Preliminary</i>
Pfizer (US, UK, EU)	mRNA	Much >> than CP	"Sterilizing immunity"	95% / 90%	No data
J & J <i>Not yet approved</i>	Viral Vector Ad26	1-2x CP	"Sterilizing immunity"	72% / 85%	No data
AstraZeneca (UK, EU)	Viral Vector Ad5	= CP	Monkeys did not become ill but still carried virus	70% / 100%	66% <i>Preliminary</i>
Novavax <i>Not yet approved</i>	Protein subunit nanoparticle	2x CP	Sterilizing immunity (mice)	89% in UK 60% in SA	No data

Vaccination in the Real World

Israeli Experience

The Countries With The Highest Rate Of Covid-19 Vaccination

Covid-19 vaccination doses administered per 100 people (Jan 30-31, 2021)*



* Malta and Iceland data as of Jan 29 and Jan 27, respectively. Numbers counted as a single dose and may not equal the total number of people vaccinated.

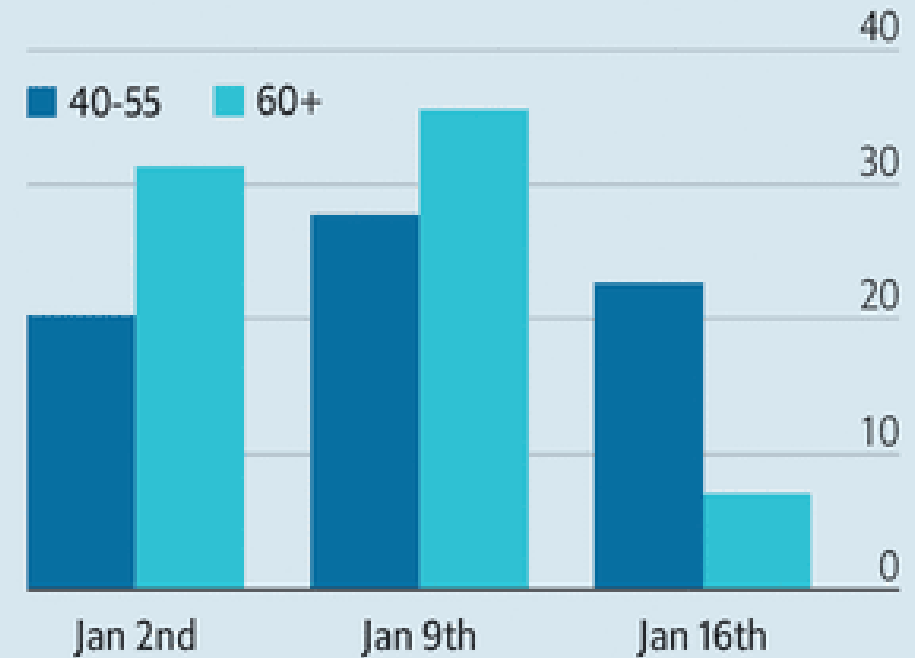
Source: Our World in Data



statista

Going in the right direction

Israel, change in critically ill covid-19 patients from previous week, by age group, 2021, %



Source: Eran Segal

The Economist

- Reactogenic effects
 - Fever, muscle aches, fatigue, headache, joint pain, injection site pain, etc.
 - Seen in more than 50% in total
 - Short-term, treatable with Tylenol or Motrin
 - Can be more severe in a minority, e.g. high fever
 - 2% - 4% with Pfizer
 - 2% to 10% with Moderna
 - NOT a contraindication to second dose
- Pregnancy – talk to Ob-Gyn
 - Not studied yet, but other vaccines safe
 - ACOG and SMFM recommend vaccination
 - WHO does not recommend (no data)
 - COVID is **high risk** in pregnancy
 - COVID vaccine may protect fetus
- Severe allergy – anaphylaxis
 - Pfizer = 6.2 / million
 - Moderna = 2.5 / million
 - Almost all have history of allergy, 30-50% have history of anaphylaxis
 - Treat with Epinephrine
 - No deaths
- Other
 - ITP, Bell's Palsy, etc. – Monitoring – so far no real signal
 - Deaths in Norway nursing homes – No increase in baseline death rate of these old and frail people

What Could Go Wrong?

What Could Go Wrong?

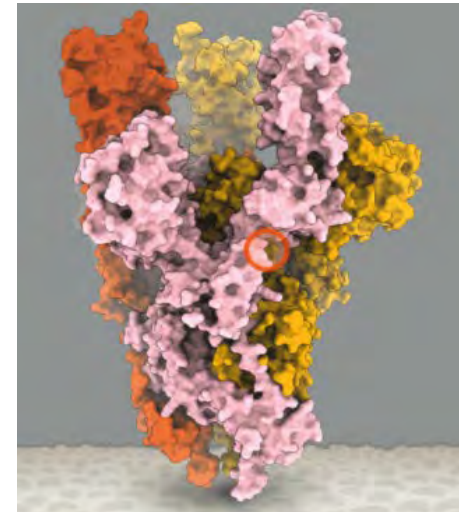
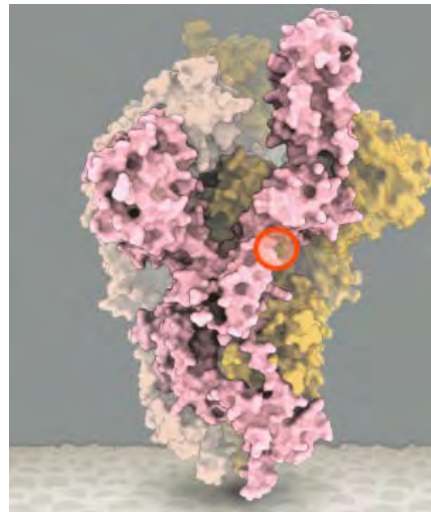
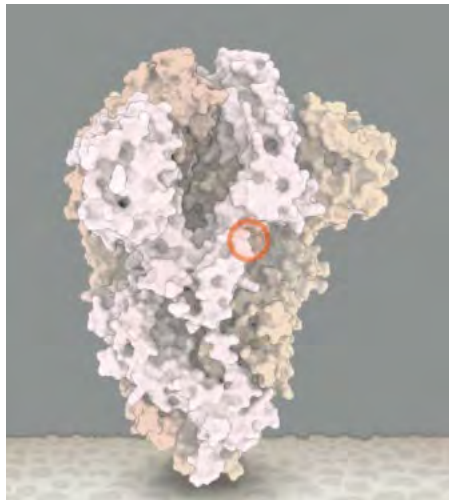
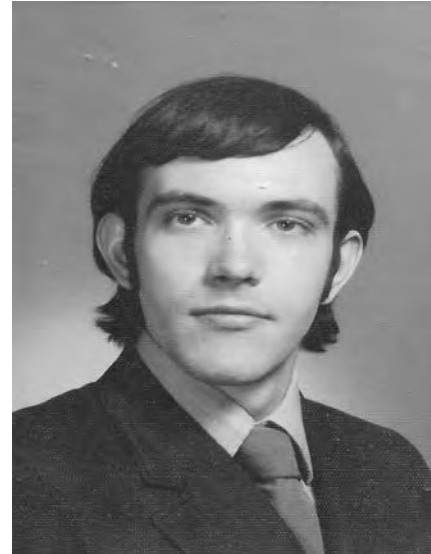
Viral mutations

- All viruses mutate – and evolve with selective pressure
- Coronavirus mutates 3x slower than Influenza
 - But every infected person is a living test tube
- Possible concerns
 - Resistance to antibodies
 - Vaccines
 - Monoclonals
 - Drug resistance

Viral Variants	Amino Acid Change in S Protein	UK B.1.1.7	SA B.1.351
	N501Y	x	x
	E484K		x
	K417T/N		x
	Other	7	7

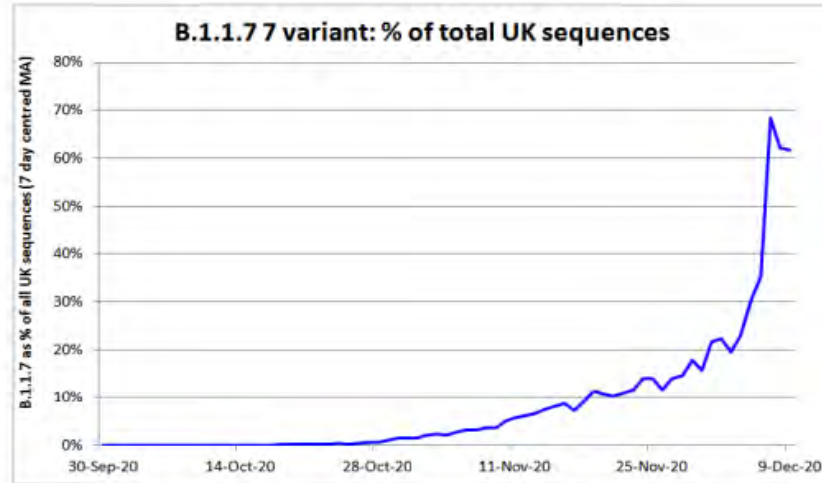
What Could Go Wrong?

Antibodies May Not “Recognize” Spike Protein with Too Much Change



What Could Go Wrong?

Viral mutations



- Why do viral variants spread?
 - Random “founder effects”
 - Selective advantage, e.g.
 - ACE2 binding efficacy
 - Evading antibodies

Vaccine Efficacy	UK B.1.1.7	SA B.1.351
Pfizer	1.4x reduction	6x reduction
Moderna	89%	8.6x reduction
Novavax	86%	60% (non HIV)

- Viral mutations occur continuously
 - Selective pressure and random effects affect spread of mutants
 - Transmissibility and lethality not connected – but still bad news
- SARS-CoV-2 mutates more slowly than influenza
 - S protein mutations – over time – may require updated vaccines
 - mRNA technology well-suited to respond to viral mutations
- What does the future hold?
 - Acute need for surveillance of COVID mutations
 - We don't know what the cut-off is for protection
 - Flu: new vaccine when new strain 8x less sensitive to old vaccine
 - Annual COVID vaccination likely for at least the next several years
 - Once primary exposure to COVID is in childhood, it probably will become a mild endemic illness

Viral Transmission in Winter



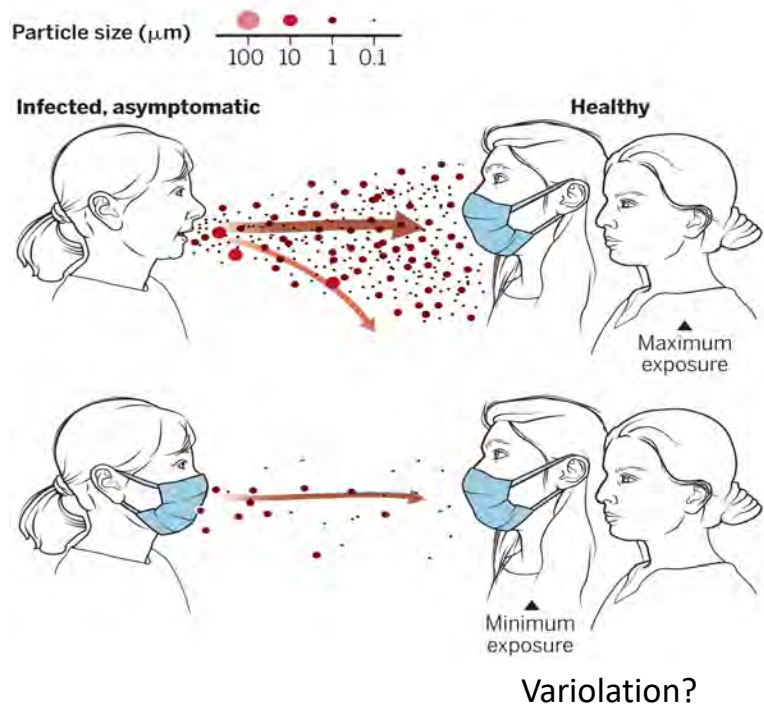
WINTER IS ~~COMING~~
Here

COVID-19 Winter Tips

- Masks, hand hygiene, distancing with extra care
- Spend time outdoors
- Condition indoor air
 - Humidify indoor air (50% relative humidity at 70 – 75 F)
 - Ventilate indoor spaces
 - Air filters for indoor spaces (MERV 13 or HEPA)
- Vitamin D supplements if levels low
 - Irish Med J April 2020
 - Meltzer et al, JAMA September 2020
 - Maghbooli et al, PLOS One September 2020
 - Kaufman et al, PLOS One September 2020
- Get extra sleep
- Get flu vaccine
- Get COVID vaccine

Masks reduce airborne transmission

Infectious aerosol particles can be released during breathing and speaking by asymptomatic infected individuals. No masking maximizes exposure, whereas universal masking results in the least exposure.



100 micron droplet settles in 5 sec
1 micron aerosol takes 12 hours

• Misconceptions

- Masks do not work
 - Masks protect healthy people from infected people!
 - Reduce egress / ingress of infected droplets and aerosols
- The virus is smaller than the pores in the mask
 - Droplets are larger than pores
 - Aerosols are trapped by other mechanisms
- Masks restrict oxygen supply
 - Measurements show no effect on oxygen or carbon dioxide
- Masks are not needed with social distancing
 - Wrong! Sneezes and coughs can travel 30 feet
- Masks are not needed outdoors
 - The risks are lower outdoors but transmission still possible
 - Use your judgement
- Masks not needed after vaccination
 - Vaccines only 95% protective
 - Possibility of transmission to vulnerable people

Masks

Types of Masks

Recommended



Non-medical disposable masks



Masks that fit properly (snugly around the nose and chin with no large gaps around the sides of the face)



Masks made with breathable fabric (such as cotton)



Masks made with tightly woven fabric (i.e., fabrics that do not let light pass through when held up to a light source)



Masks with two or three layers



Masks with inner filter pockets

Not Recommended



Masks that do not fit properly (large gaps, too loose or too tight)



Masks made from materials that are hard to breathe through (such as plastic or leather)



Masks made from loosely woven fabric or that are knitted, i.e., fabrics that let light pass through



Masks with one layer



Masks with exhalation valves or vents



Wearing a scarf/ski mask as a mask

Masks

Types of Masks



NIOSH Certified Makrite 9500-N95 Pre-Formed Cone Particulate Respirator Mask. M/L Size (Pack of 20 Masks)

★★★★☆
\$69⁹⁷ (\$3.50/
FREE Shipping



Powecom FFP2 Protective Face Masks (Headband), ≥ 94%+ Filtration Efficiency, Disposable Particulate Respirator - CE 2834 NB certified,...

★★★★☆
\$27²⁰
FREE Shipping



KF94 - Face Protective Mask for Adult (White) [Made in Korea] [20 Individually Packaged] KN FLAX 4-Layers Premium KF94 Certified Face...

★★★★☆
\$36⁹⁹
FREE Shipping

• Non-NIOSH Approved Disposable Filtering Facepiece Respirators Manufactured in China EUA FAQs

• Appendix A: Authorized Respirators, Non-NIOSH Respirators Manufactured in China (Updated October 15, 2020)

• Respirator Models No Longer Authorized (Updated October 15, 2020)

Appendix A: Authorized Imported, Non-NIOSH Approved Respirators Manufactured in China (Updated: October 15, 2020)

The table below includes a list of non-NIOSH respirators authorized by [this Umbrella EUA](#) for emergency use during the COVID-19 public health emergency.

As stated in the EUA, authorized respirators should be used in accordance with CDC's recommendations. For the most current CDC recommendations on optimizing respirator use, please visit CDC's webpage: [Strategies for Optimizing the Supply of N95 Respirators](#).

Search: Show entries

Manufacturer	Respirator Model(s)	Instructions for Use
--------------	---------------------	----------------------

<https://www.fda.gov/medical-devices/coronavirus-disease-2019-covid-19-emergency-use-authorizations-medical-devices/personal-protective-equipment-euas#respirators>

HOUSTON
Methodist[®]
LEADING MEDICINE

Vaccine Distribution Plan

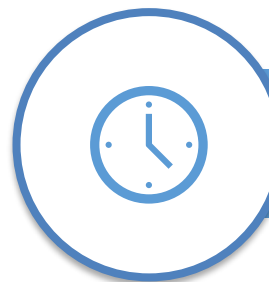
Roberta L. Schwartz, PhD
February 3, 2021



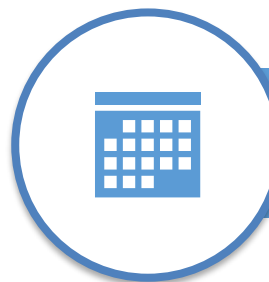
Vaccine Sites



7 Sites

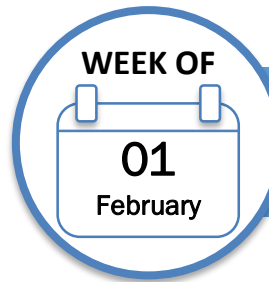


7a-p, M-F, 8a-12p Sat

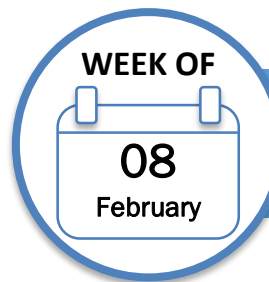


7,200 Daily Capacity

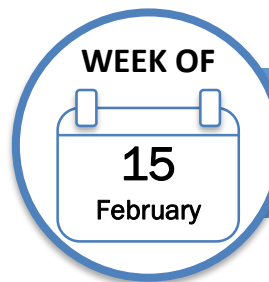
Vaccine Sites



WEEK OF
01
February
55,000 scheduled vaccine appointments*



WEEK OF
08
February
30,000 scheduled vaccine appointments*



WEEK OF
15
February
20,000 scheduled vaccine appointments*

**Have additional capacity if increased vaccine inventory is received
As of 2/2/2021*

HM Vaccination Hub



Vaccine Hub

Houston Methodist was selected as one of the vaccine hubs in the Greater Houston region.

[Learn More](#)



Expand Reach

Vaccine hub at JRB on mega Saturday, January 16th targeted the underserved.



Hours of Operations

7:30 AM – 7:30 PM



Vaccinations

4,300 patients vaccinated



Volunteers

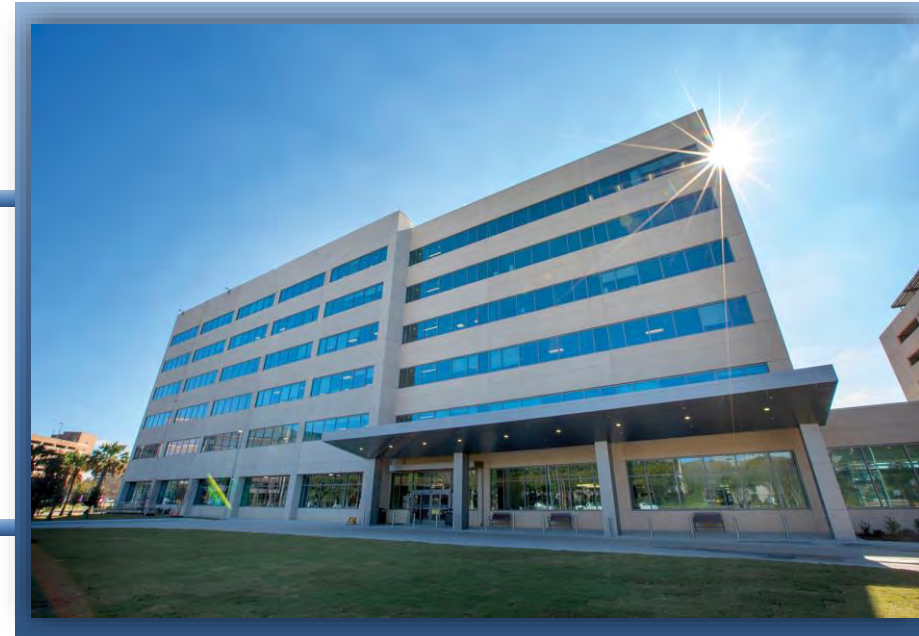
~400
THANK YOU!

*Included 40
Physician Volunteers*



Booster Shots

Vaccine hub at JRB this weekend Saturday, February 6th for mega booster event.



Vaccine Distribution Plan at Houston Methodist

1A

- HM Employees
- Healthcare Workers
- First Responders (based on State criteria)

1B (Part One)

- Patients 75+ being scheduled

Patients invited to schedule now.

To date, 35,000 completed with 15,000 more scheduled.

1B (Part Two)

- Patients 65+ being scheduled

Those with medical conditions invited to schedule this week.

Starting with 60,000 invitations Thursday.

1B (Part Three)

- Patients 16+ with a medical condition

Adults with medical conditions will be invited to schedule when there is sufficient supply of vaccine.

Healthy adults will be invited to schedule vaccine appointments once there is sufficient supply and it is authorized by the State.

HM Vaccine Distribution – Public Form

A screenshot of a web browser showing the Houston Methodist COVID-19 Vaccine Scheduling Form landing page. The browser tab is titled "State of Texas COVID-19 Vaccine". The address bar shows the URL "https://www.houstonmeth...". A red banner at the top reads: "A COVID-19 vaccine is currently only available to priority at-risk individuals. Learn more >". Below the banner is the Houston Methodist logo and navigation icons. The main heading is "State of Texas Vaccine Hub". A "Special notice" states: "Houston Methodist is one of three sites in the Houston area selected by the State of Texas to serve as a vaccine hub." The text explains that individuals 65 or older can fill out the form to schedule a vaccine appointment, but walk-ins will not receive vaccinations. It also notes that vaccine supply is limited. A green button at the bottom says "Houston Methodist COVID-19 Vaccine Scheduling Form" and mentions "The survey will take approximately 5 minutes to complete."

A screenshot of the Houston Methodist COVID-19 Vaccine Scheduling Form input fields. The browser tab is titled "State of Texas COVID-19 Vaccine". The address bar shows the URL "https://www.houstonmeth...". The form contains the following fields:

- 1. Enter your answer
- 2. Last Name (Legal) *
Enter your answer
- 3. Date of Birth (Must be over 65) *
Please input date in format of M/d/yyyy
- 4. Mobile Phone Number *
Enter your answer
- 5. Preferred Language *
 English
 Spanish
- 6. Street Address *
Enter your answer

Houston Methodist is starting this week to schedule members of the public who are 65+ with high-risk medical conditions.

[Home](#) > [For Patients](#) > [Coronavirus Disease](#)

COVID-19 Vaccine Information

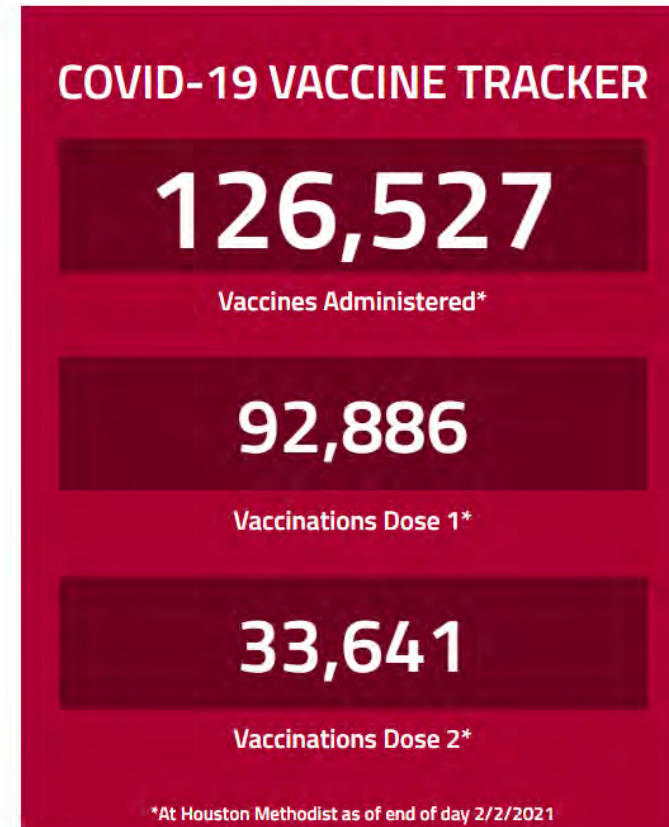
Welcome to Houston Methodist's COVID-19 vaccine information page. Here you will find information on patient vaccinations, [answers to frequently asked questions](#), helpful resources and a link to [Governor Greg Abbott 's COVID-19 vaccine allocation process](#).

Please check back here often for vaccine updates and share this page with family and friends who also may have questions about the COVID-19 vaccine.

Special notice: Houston Methodist is a state-designated vaccine hub for the at-risk public. We had an overwhelming response and due to the limited vaccine supply, we unfortunately have no more appointments available at the present time.

We appreciate your patience and understanding as we follow state guidelines to be sure we vaccinate the most vulnerable among us. We are working very hard to vaccinate our community as supplies allow. We will advise the community when we can repost the form for more registrants.

If you have accessed a Houston Methodist doctor or service in the past two years, please do not use the hub to sign up for a vaccine. Instead, we will contact you by text, email or phone when we reach your vaccine priority group, based on the criteria listed below.



COVID Vaccine Tracker

Completed Vaccinations January 4th – January 31st

	Week of Jan 4th	Week of Jan 11th	Week of Jan 18th	Week of Jan 25th
<i>PO</i>	9,528	19,894	14,451	19,406
<i>Hospital</i>	13,338	7,356	4,136	3,947
<i>Total</i>	22,866	27,250	18,587	23,353

↓
 Launch of
 PO Vaccine
 Sites

↓
 Mega
 Event
 Week

↓
 4 New
 Sites
 Added

Updated through 1/31/21
 "Hospital" Includes Employee Health, Cancer,
 Transplant, and 1A Healthcare Workers

Messages from Patients

You did a fantastic job administering vaccinations today. So organized and professionally executed! Thank you!

Thank you so much. Everything else has been perfect.

Good job Methodist Hospital!

That was an incredible experience you guys are so kind and so organized, and I was so excited to get my shot I had tears in my eyes so thank you thank you thank you.

It was very organized! Thanks much.

I would like to give a GREAT BIG SHOUT OUT TO ALL THE STAFF WHO WERE INVOLVED IN TODAY'S MASS VACCINATION EVENT. The lines moved quickly and efficiently, and I know the organization skills were well thought out. I'll be back on Feb. 6th to get my 2nd inoculation. Thank you for taking the stress off me and I wish everyone good health! WELL DONE!

Thank you. We sincerely appreciate the great job all of you did today. Right from the time we drove into the parking garage to the time we drove out everything went so smoothly. So well organized, hats off to you all. God's Blessings upon all of you.

*Hundreds of
complimentary messages
from our patients!*

Everything was so well organized. We were very impressed. Thanks so much and God bless!

Thank you for all your help. Have a peaceful and fulfilling day!

Excellent!! The staff was amazing and very helpful and kind!! Thank you for everything!!

I appreciate all of you. Thank you very much for informing me. May God keep you and yours safe.

How can you help?

- Please encourage patients to be patient with us and help them understand we are working diligently to schedule them as the state's guidelines and our vaccine inventory allow.
- There is still very little vaccine inventory available.
- We are unable to accommodate walk-ins or waitlists.
- We are unable to vaccinate individuals for their 2nd dose if we didn't provide their 1st dose.
- Understand that we are not vaccinating acute inpatients.

Houston Methodist Vaccine Website

<https://www.houstonmethodist.org/coronavirus/vaccine-updates/>

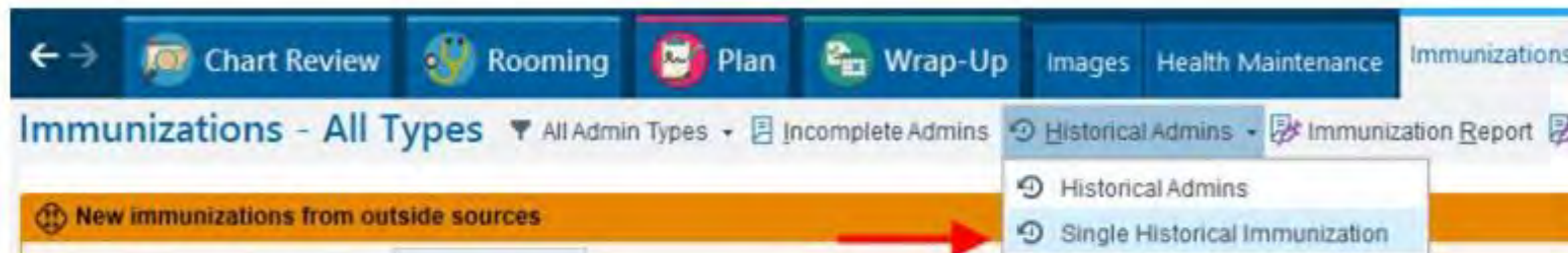
Epic Smartphrase



Patient Inquiries

<https://www.houstonmethodist.org/covid-vaccination-team/>

Entering COVID-19 vaccine if obtained externally



HOUSTON
MethodistSM
LEADING MEDICINE

THANK YOU FOR ATTENDING OUR TOWN HALL CONVERSATION

If you would like more information about The Society for Leading Medicine,
please contact foundation@houstonmethodist.org

Take care and be well

HOUSTON
Methodist[®]
LEADING MEDICINE